

MEDIAVAULT

4210
4105

Serious storage solutions you can afford.

Powerful 4Gb Fibre Channel performance for today's HD applications

Huge Systems' 3rd generation of RAID architecture, the MediaVault 4210 and 4105, combine the latest 4Gb Fibre Channel interface technology with cost-effective ATA disk drive technology to deliver the reliable performance needed for today's most demanding HD applications. All models are compatible with Mac, Windows, Unix and Linux platforms, as well as major brands of video editing, capture and playback cards/devices. A single host channel is capable of burst performance to 400 MB/second and READ/WRITE performance of 300MB/second; two channels striped can sustain near 600 MB/second¹. A single MediaVault 4105 will record and play back the highest quality video, including 1080i HD at 10 bits in HDT mode³; or up to 7 uncompressed standard definition video streams² with the dual channel 4210—making it the ideal storage solution for standard definition and high definition editing.

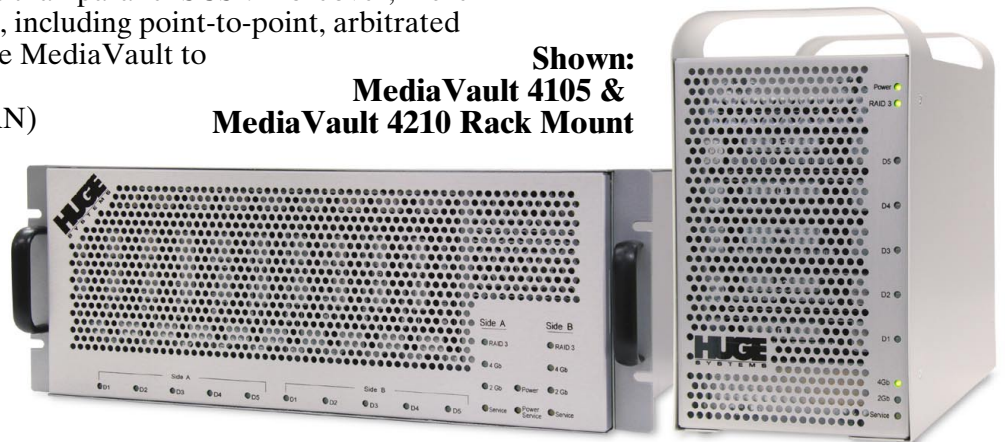
Key Features:

- Single or Dual Fibre Channel 4Gb interface
- Parallel ATA disks
- Selectable RAID levels (0,3)
- RTR – Real Time RAID reconstructs data on the fly
- HDT – High Definition Turbo mode ensures HD data rate throughout the entire array (with reduction of capacity)
- Compatible with Mac, Windows, Unix, Linux
- Compatible with major brands of video editing, capture and playback cards/devices

Improved Simplicity & Connectivity

Fibre Channel dramatically simplifies installations—offering smaller, simpler cables, allowing more resilience to signal interference, and enabling much greater cable distances than parallel SCSI. Moreover, Fibre Channel supports multiple topologies, including point-to-point, arbitrated loop, and switched fabric, enabling the MediaVault to operate equally effectively in direct attached or storage area network (SAN) environments (SAN software sold separately). You don't have to worry about existing Fibre Channel infrastructure either—MediaVault's 4Gb interface is backwards compatible with 2Gb and 1Gb Fibre Channel components.

Shown:
MediaVault 4105 &
MediaVault 4210 Rack Mount



Highly Reliable

MediaVault allows you to select either RAID 0 or RAID 3 to match the performance and reliability best suited for the application. Utilize RAID 0 (striped drives) to achieve the greatest performance, or utilize RAID 3 (data protected) for excellent performance and the added protection of no performance degradation and no data loss if a drive fails. Huge Systems' highly efficient RAID engine performs rebuilds of failed drives in the background—with easy service and upgrade.

HUGE

S Y S T E M S

A CIPRICO Company

www.hugesystems.com 1-877-HUGE-SYS

4 8 4 3 7 9 7

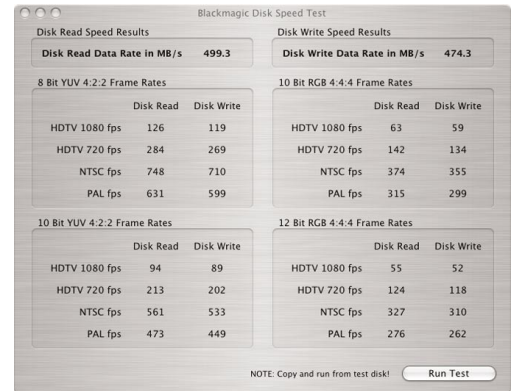
MEDIA VAULT SPECIFICATIONS

4210
4105

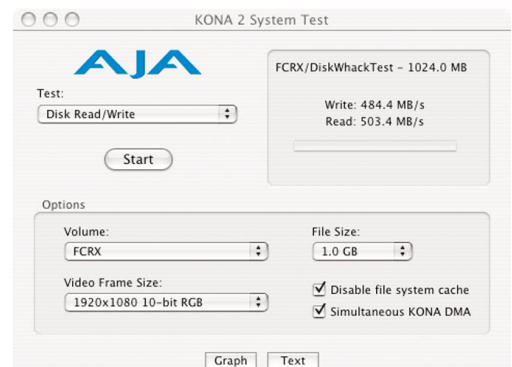
MediaVault 4105

Media Vault 4210

Available Configurations	Single Channel - 5 Drive HMV-FCR-800-M (800GB) HMV-FCR-1250-M (1250GB) HMV-FCR-2000-M (2000GB)	Dual Channel - 10 Drive HMV-FCRX-1600-DM (1600GB) HMV-FCRX-2500-DM (2500GB) HMV-FCRX-4000-DM (4000GB)
Performance		
Burst	400 MB/s	800 MB/s
Maximum¹	300 MB/s	Near 600 MB/s
Minimum⁴	100 MB/s	200 MB/s
HDT Mode^{3,4}	200 MB/s	350+ MB/s (striped)
Host Interface		
Type	Single Channel 4Gb FC	Dual Channel 4Gb FC
Topologies	Aribitrated loop, fabric switching	Aribitrated loop, fabric switching
Physical Connector	SFP-to-LC	SFP-to-LC
Disk Drive		
Single Drive Capacities	160GB, 250GB, 400GB	160GB, 250GB, 400GB
Drive Interface	Parallel ATA	Parallel ATA
Physical Dimensions		
Chassis Options	Tower	Tower or 4U Rack Mount
Dimensions (WxHxD)	6.25" x 11" x 12.5"	7" x 19" x 12.25"
Weight	20 lbs.	50 lbs.
Power		
Input requirements	100v - 240v, 50/60 Hz	100v - 240v, 50/60 Hz
Current draw		
Startup	117VAC / 1.0A	117VAC / 2.0A
Seek	0.64A / 75W	1.28A / 150W
Idle	0.4A / 47W	0.8A / 94W
Max/Norm	175W / 75W	350W / 150W
Power Supply	Single, auto-ranging	Dual, auto-ranging
Temperature		
Operating	5° to 40° C	5° to 40° C
Non-Operating	-40° to 70° C	-40° to 70° C
Humidity		
Operating	5-80% non-condensing	5-80% non-condensing
Non-Operating	5-95% non-condensing	5-95% non-condensing
Regulatory Compliance	FCC, GS, TUV, CE	FCC, GS, TUV, CE
Warranty	3 year, return-to-factory	3 year, return-to-factory
Accessories/Options	SFP to LC optical transceiver modules included. Fibre Channel - optical LC to LC cable(s) supplied. Field replacement / spare drives, power supplies, RAID controllers available.	



Above: The Blackmagic Disk Speed Test benchmark results of DeckLink HD Pro, HMV-FCRX-1600-DM, ATTO FC-42XS in a G5 Dual Processor 2GHz.



Above: The AJA System Test benchmark results of KONA 2, HMV-FCRX-1600-DM, ATTO FC-42XS in a G5 Dual Processor 2GHz.

¹ Based on ATTO's Bench32, measured using HP xw8000, ATTO FC-42XS, and Huge FCRX-1600-DM striped using ldmutil.exe and Window's Disk Management.

² Based on Apple's FCP HD on a G5 2GHz dual processor, ATTO FC-42XS, Huge FCRX-1600-DM, AJA KONA 2. Standard definition is 8 bit.

³ Using HDT mode will result in reduction in usable capacities. 80% usable in RAID 0, 40% usable in RAID 3.

⁴ Based on AJA KONA 2 System Test on a G5 2GHz dual processor, ATTO FC-42XS, Huge FCRX-1600-DM, AJA KONA 2.



A CIPRICO Company

30141 Agoura Road, Suite 212
Agoura Hills, CA 91301

1-877-484-3797 • www.hugesystems.com

MV4210050305REVA